

CORRECTION

Open Access



Correction: Predicting drug response from single-cell expression profiles of tumours

Simona Pellecchia^{1,2}, Gaetano Viscido^{1,3}, Melania Franchini^{1,4} and Gennaro Gambardella^{1*}

Correction: *BMC Med* 21, 476 (2023)

<https://doi.org/10.1186/s12916-023-03182-1>

Upon reviewing the published manuscript [1], the authors identified a errors affecting Figure 2 that require clarification:

1. In Figure 2C, the wild-type (WT) and mutated TP53 cell lines were incorrectly colour-coded.
2. In Figure 2D and 2E, the labels for TP53 mutated cells and wild type were inadvertently inverted.
3. There is a typographical error in the caption of Fig. 2, where the word "XX" should be replaced with "24".

The original article can be found online at <https://doi.org/10.1186/s12916-023-03182-1>.

*Correspondence:

Gennaro Gambardella
gambardella@tigem.it

¹ Telethon Institute of Genetics and Medicine, Naples, Italy

² Genomics and Experimental Medicine Program, Scuola Superiore Meridionale, Naples, Italy

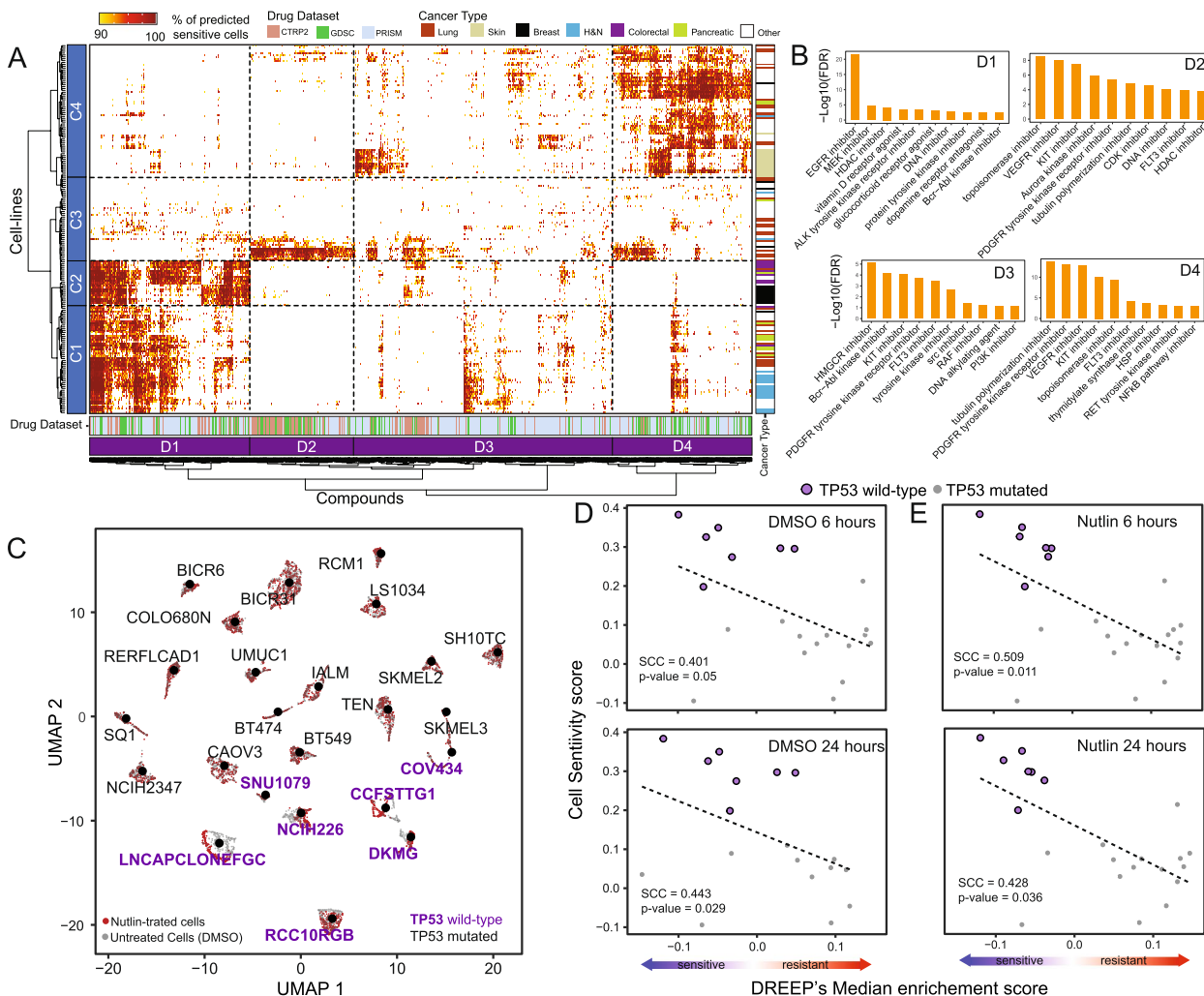
³ Department of Chemical, Materials and Industrial Engineering, University of Naples Federico II, Naples, Italy

⁴ Department of Electrical Engineering and Information Technology, University of Naples Federico II, Naples, Italy



© The Author(s) 2024. **Open Access** This article is licensed under a Creative Commons Attribution 4.0 International License, which permits use, sharing, adaptation, distribution and reproduction in any medium or format, as long as you give appropriate credit to the original author(s) and the source, provide a link to the Creative Commons licence, and indicate if changes were made. The images or other third party material in this article are included in the article's Creative Commons licence, unless indicated otherwise in a credit line to the material. If material is not included in the article's Creative Commons licence and your intended use is not permitted by statutory regulation or exceeds the permitted use, you will need to obtain permission directly from the copyright holder. To view a copy of this licence, visit <http://creativecommons.org/licenses/by/4.0/>. The Creative Commons Public Domain Dedication waiver (<http://creativecommons.org/publicdomain/zero/1.0/>) applies to the data made available in this article, unless otherwise stated in a credit line to the data.

Figure 2



The corrected version of Figure 2 and its caption can be viewed ahead for reference.

In addition, the following line in the main text should be changed from:

"As depicted in Fig. 2C, seven of the 24 cell lines within this dataset harbour a missense mutation in the TP53 gene, while all other cell lines retain the wild-type (WT) TP53 form."

to:

"As depicted in Figure 2, seven of the 24 cell lines within this dataset retain the wild-type (WT) TP53 form, while all other cell lines harbour a missense mutation in the TP53 gene."

Reference

1. Pellecchia S, et al. Predicting drug response from single-cell expression profiles of tumours. BMC Med. 2023;21:476. <https://doi.org/10.1186/s12916-023-03182-1>.